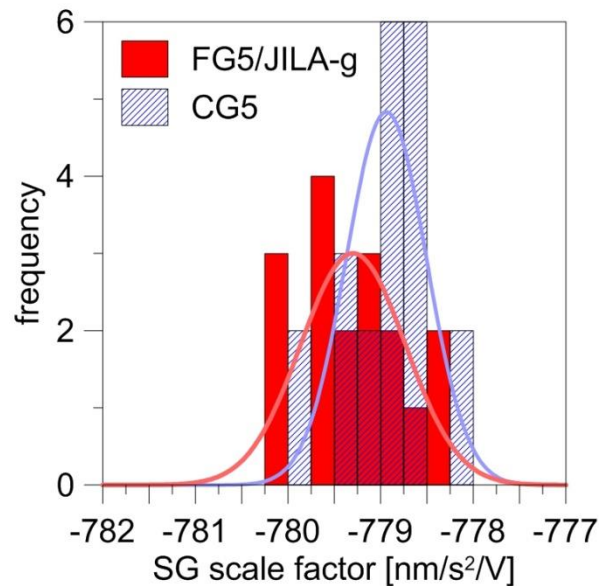
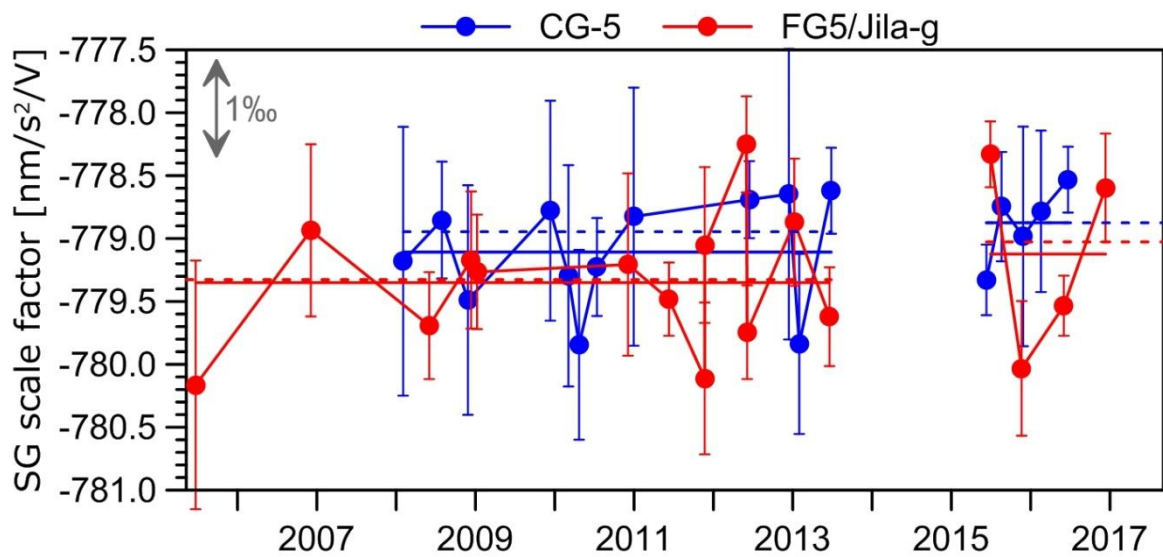
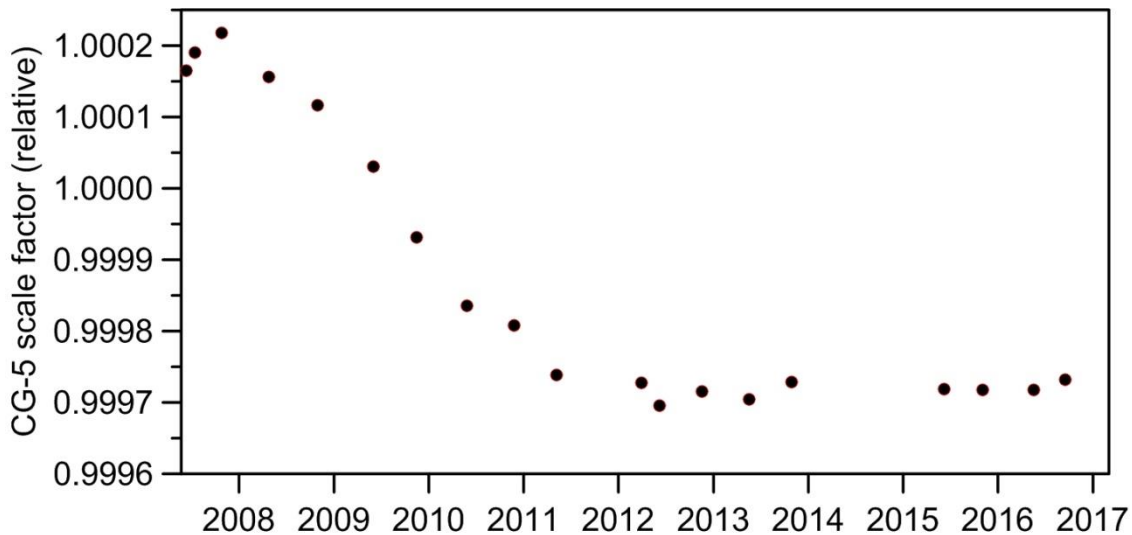
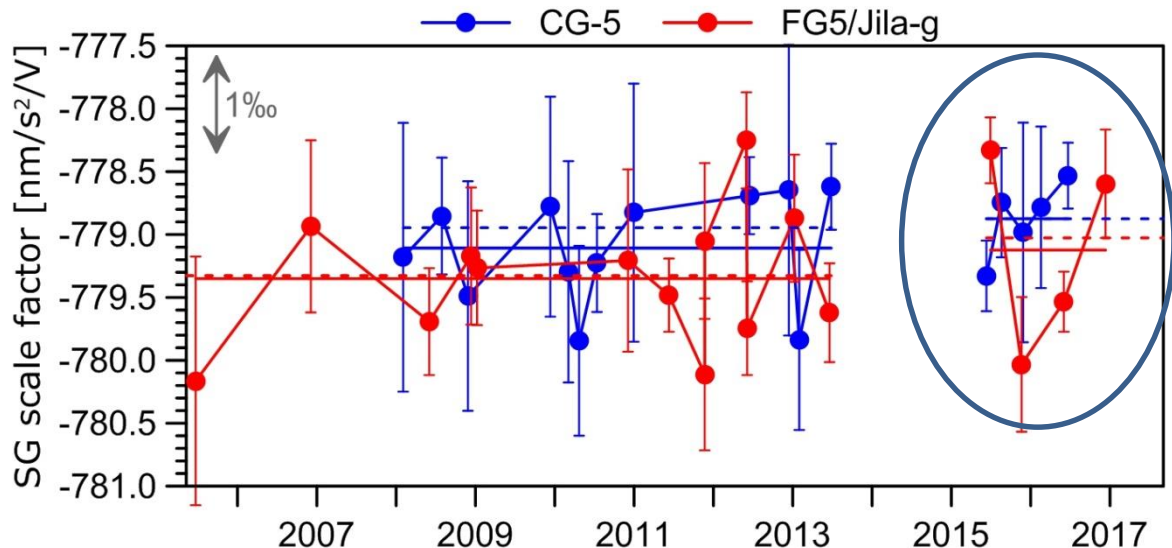


## Status Report CO, April 2017

- GWR C025 is operating at Conrad observatory since 20071109
- Hardware crash in November 2013
- Re-initialization (cool-down, sphere levitation) end of February 2015
- SG is operating again since March 2015
- Upload to IGETS (data and calibration file) complete (March 2017)
  
- Time lag change (8.702 s → 11.640 s)
- Scale factor change ?



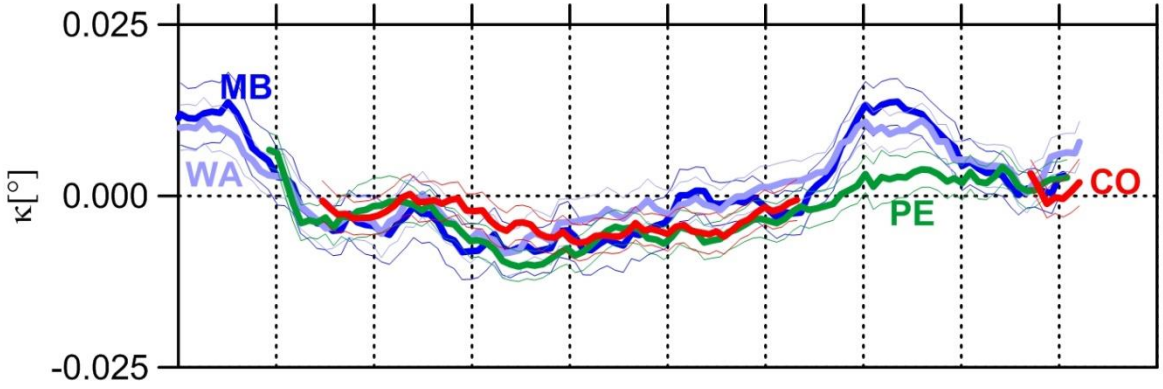
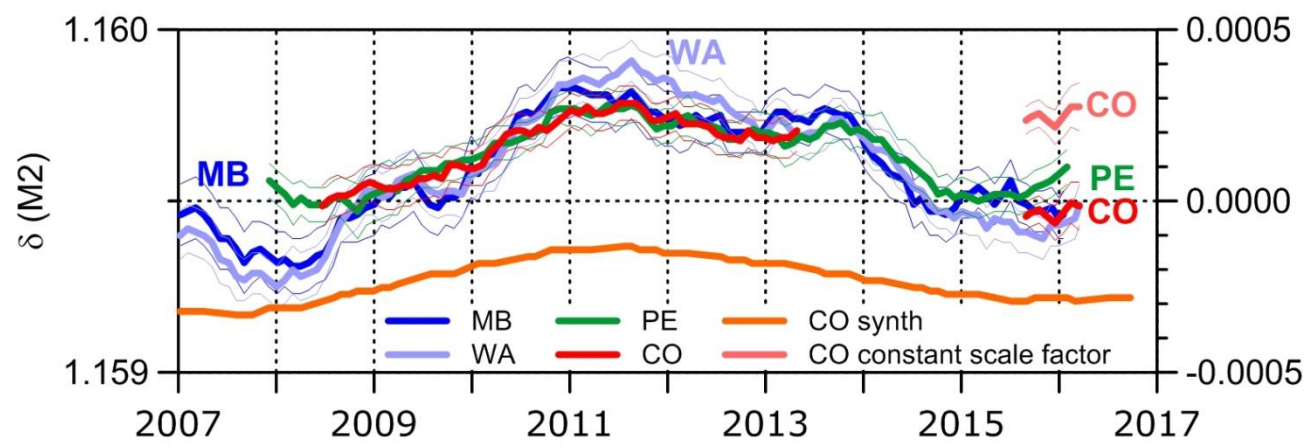


Scale factor change (0.2 ‰):

-779.3287 nm/s<sup>2</sup>/V  
 $\pm 0.0995$

→

-779.1700 nm/s<sup>2</sup>/V  
 $\pm 0.1131$



Transfer function  
change confirmed  
by tidal analyses  
(M2 modulation  
pattern)